

ECE-TRIS: ONLINE PERSONNEL ACCOUNT

ECE-TRIS ARTICLE FOR ECE PROFESSIONALS



New accounts can now be requested online. This new feature will step users through account set-up and make them aware if they may already have an existing ECE-TRIS account.

CHECK OUT THE TIPS BELOW:

- Go to ECE-TRIS Website <https://tris.eku.edu/ece>
- Click on REGISTER > Choose Professional Account



Register

New to ECE-TRIS? Sign up for either a **Training Request Membership** or a **Full ECE-TRIS** account.

[Register](#)



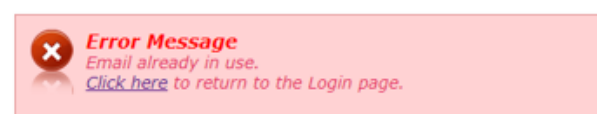
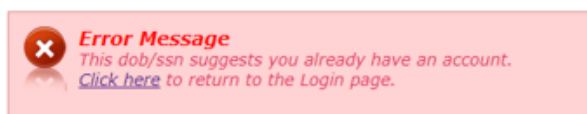
Kentucky Early Childhood Professional Account

This account will initiate the tracking of your professional development, certifications, and education records. It will also provide access to online training hosted on ECE-TRIS such as Pediatric Abusive Head Trauma.

[Create ECE Account](#)

- **ENTER DETAILS ON FORM**

If you receive either of the following errors, return to login page because you likely already have an account. There are options on the login page to help retrieve/reset your account information.



You will receive the following message if your account request was successful.

ECE-TRIS Account Membership Form

Your request for a new user account is under review by ECE-TRIS staff. You will receive an email with your sign-in information once your account has been verified.

You should receive an email reply within 1-2 business days (M-F)

ECE-TRIS!
Growing Professionals, Growing Kids
(859)622-8811, <https://tris.eku.edu/ece>